

PROFESSIONAL LIFE #3:

ADDRESSING A
"CRITICAL ISSUE"

& THE POWER OF THE TASK FORCE

GENTLEMEN ..

LADY..

SUB CLUSTER
SENIOR DIRECTOR



"i CALLED THIS AD HOC MEETING
SO LATE IN THE DAY TO
SHARE SOME IMPORTANT
NEWS"



SUB CLUSTER
SENIOR DIRECTOR

..I WAS JUST INFORMED BY
OUR SENIOR MANAGEMENT[©] THAT..

..WE WERE FACING A
CRITICAL ISSUE!



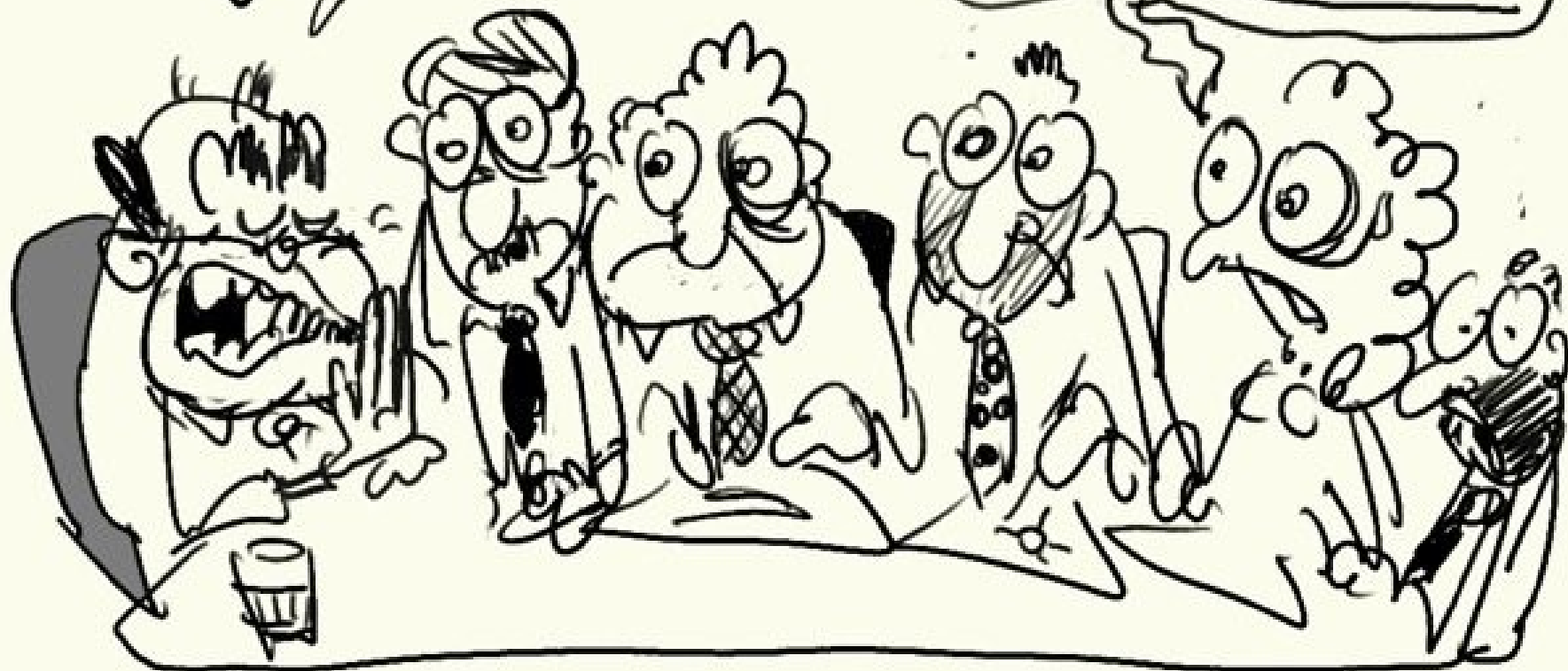
"DO YOU MEAN..
A CRUCIAL ISSUE?"



NOT YET. FOR NOW IT IS ONLY AT THE "CRITICAL ISSUE" STAGE;

LET US NOT PANIC.

"YOU MEAN WE ARE FACING A CRITICAL ISSUE?"



BUT WE MUST ACT NOW TO ADDRESS THIS CRITICAL ISSUE

OF COURSE!

ABSOLUTELY

TOTALLY AGREE

WE NEED TO ACT YESTERDAY!

LET'S DO IT!



Wiiiiiiiiii

SORRY FOR BEING LATE, COLLEAGUES!

I WAS NOTE TAKER AT A WORKSHOP ON NOTE TAKING..



"SO WHAT IS THIS AD HOC
EXCEPTIONAL MEETING
ALL ABOUT?"

TAKE A
SEAT

DID WE LOSE
SOME BENEFITS
OR WHAT?



AS I SAID: WE ARE FACING AN IMPORTANT ISSUE. AND WE ARE WONDERING HOW TO ADDRESS IT...

"IF THAT ISSUE IS SO IMPORTANT WE SHOULD ADDRESS IT AS 'MISTER ISSUE'!"

AHAHA
HAHAHA!

Hihihi!



HEUM-HEUM! THIS IMPORTANT ISSUE IS A CRITICAL ISSUE ...

ANY IDEAS ON HOW TO ADDRESS IT?

HOW ABOUT SETTING UP A WORKING GROUP?



MMM.. THAT REALLY SOUNDS
COMMUNIST.. ANY OTHER?

YES!



MMMM.
GO AHEAD..

..WE SHOULD SET UP A TASK FORCE!

A T...

A TASK
FORCE?

A TASK
FORCE!

YES!

BREAKING
(NEW GROUND..)



YES! THAT'S IT! A TASK FORCE!!

A BUREAU-WIDE TASK FORCE!

AND HIGH LEVEL,
NOT LOW LEVEL!

"WHICH WILL
LEAD ON THE
ISSUE!"

A SPECIAL
TASK FORCE!

..AND
INTEGRATED,
NOT NOT
INTEGRATED



Si!!! (A BUREAU-WIDE LEADING SPECIAL HIGH-LEVEL INTEGRATED TASK FORCE!)



TAKE THAT, YOU CRITICAL ISSUE!

I CAN HEAR THE CRITICAL ISSUE SHIVERING!

GENTLEMEN!
-LADY-

THE "BUREAU-WIDE LEADING
SPECIAL HIGH-LEVEL INTEGRATED
TASK FORCE[®] ON THE CRITICAL
ISSUE" HAS JUST BEEN SET UP!

"THE "BULS.H.i.T[®] ON
THE CRITICAL ISSUE"!

THIS IS
"WONDERFUL"!



COLLEAGUES, COLLEAGUES. WE HAVE MADE GREAT PROGRESS—BUT BEFORE WE MOVE FORWARD, LET US DECIDE ON THE GOVERNING STRUCTURE OF THE B.U.L.S.H.I.T.™



ANY THOUGHTS?

SUB CLUSTER SENIOR DIRECTOR

WELL... I THINK YOU ARE UNIQUELY QUALIFIED TO CHAIR THE 'BU.L.S.H.I.T'

THERE COULD BE SUB-THEMATIC WORKING GROUPS,

THEN WE'D HAVE A STEERING COMMITTEE

..AND A SUPPORT OFFICE!

AND AN ADVISORY BOARD

AND SPECIAL ADVISERS

TRUE, TRUE...

MMH

MMH



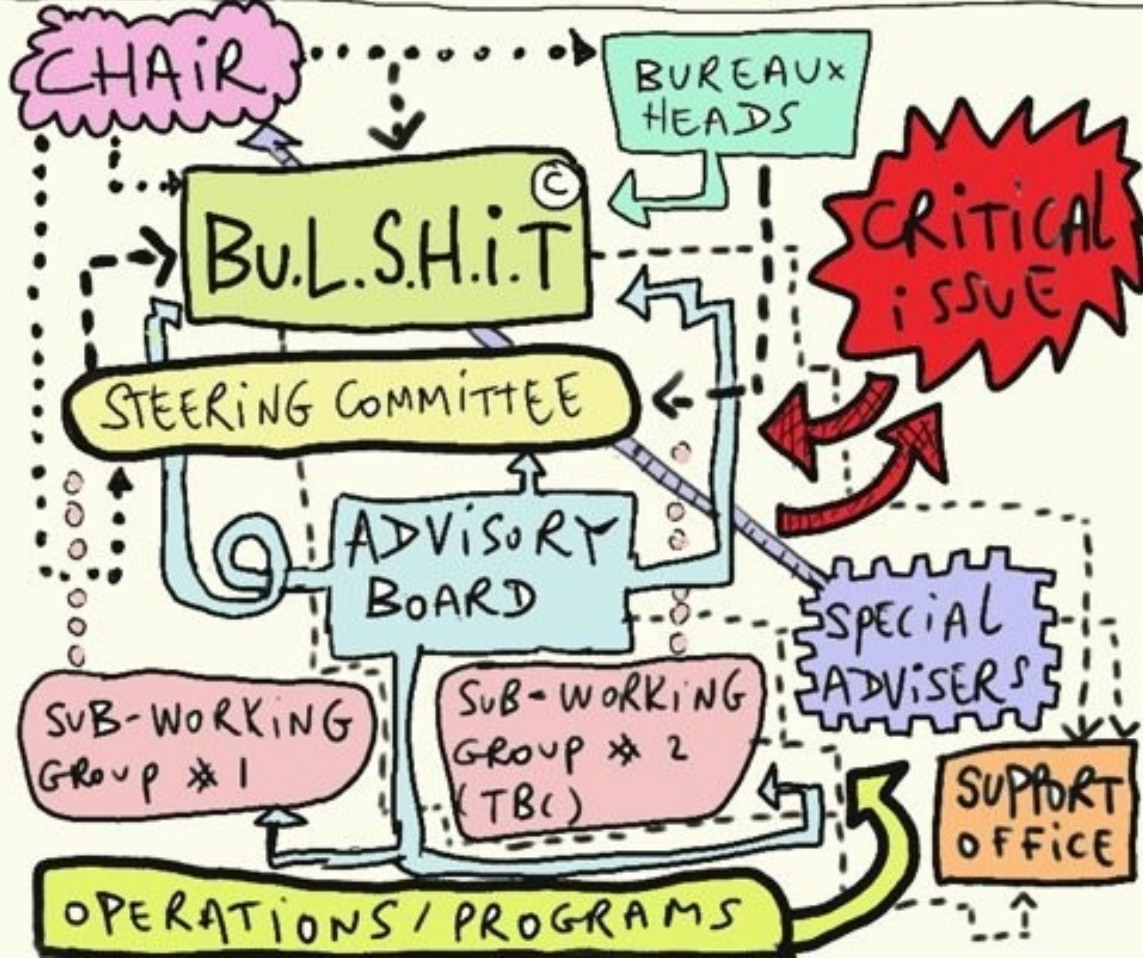
GOD, GOD.. LET ME SUMMARIZE

NOTE TO FILE

CONFIDENTIAL

- TASK FORCE STRUCTURE -

- KEYS:**
-> OVERSEES
 - - -> BOSSES AROUND
 - > TALKS TO
 - oooo REFLECTS ON
 - > WRITES NOTES TO
 - > IMPACTS ON
 - > MEETS IN ELEVATOR
 - > HAS COFFEE WITH



COLLEAGUES: THIS IS VERY PROMISING.
IN ORDER TO MOVE FORWARD FAST
ON THIS CRITICAL ISSUE, THE NEXT
B.U.L.S.H.I.T MEETING, WILL TAKE PLACE
IN 2 WEEKS



THANK
You



SUB CLUSTER
SENIOR DIRECTOR

MANV.